



PLATINUM PRO *Construction*

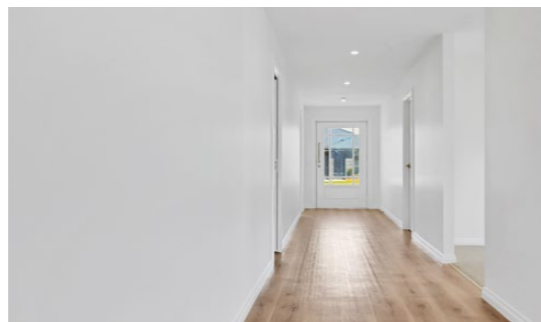
PROJECT PORTFOLIO



It starts with us.

49 Calthorpe

202m²



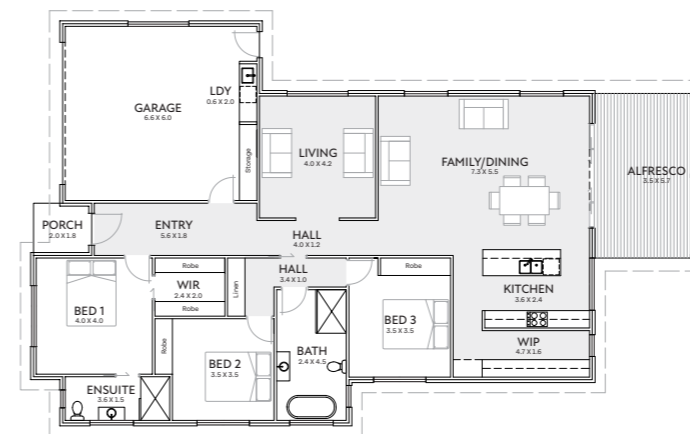
Classic Hamptons charm

49 Calthorpe Street brings timeless Hamptons style to life—a beautifully finished home designed for comfort, elegance, and everyday living for a young family ready to grow.

Built on a flat, fully serviced block, this home delivers thoughtful design and high-quality finishes at every turn. Double-glazed windows flood the interiors with natural light, while Caesarstone benchtops, soft-close cabinetry, and brushed brass fittings add a refined, luxurious touch.

Designed with family life in mind, there's plenty of practical space, with a walk-in robe, custom laundry cabinetry, and an easy connection to the undercover alfresco—perfect for relaxing or entertaining year-round. The Hamptons-style feature front door sets the tone the moment you arrive—warm, welcoming, and full of classic charm.

At Calthorpe, elegance meets everyday ease—the perfect place for a young family to call home.



BRANDON & MAISEE

“The overall experience with PPC was fantastic. We feel like our opinions and feedback were valued and our dream family home has become a reality. The early planning stage helped us be able to get into action and start our process quicker.”

Watch the handover video

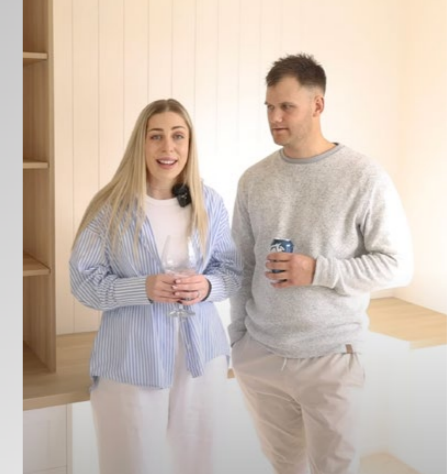


Platinum Pro Construction - Handover with Branden and Maisiee 3:20



9 Hugo

263m²



BROCK & ABBEY

“The whole process from start to finish is seamless and so easy! From the design process to the end product, we couldn't be happier with the result of our new beautiful home. The communication we received throughout the whole process was fantastic and it kept us up to date on our project and what was happening next. Platinum Pro has been incredible to deal with. They have built our first two homes and we wouldn't hesitate to recommend them to anyone who is considering building.”

Eye catching coastal luxe!

This custom design and build for Ulverstone clients Abbey and Brock is divine! They came to us wanting something unique, and boy, did they get it. The striking white and silver top ash clad exterior of 9 Hugo gives a hint to what you find when entering this four bedroom home – a light and fresh look, with comfort in the curves.

The double height kitchen and living space provides an air of luxury, and when matched with gold and timber features, the sense of grandeur just keeps coming! Organic touches and warm lighting in the ensuite, master bed and dining spaces compliment the clean lines.

The dowel timber feature wall of the master bedroom further invites you into an enticing walk in robe and ensuite.



Watch the handover video



Platinum Pro Construction - Brock and Abbey - Video 3

26 Jerding

202m²



A light-filled forever home, tailored to real life

=This forever home is everything our clients hoped for—practical, homely, and filled with natural light. It's a place that reflects how they live, with clever touches that make everyday living easy and enjoyable.

A family favourite? The custom dog door—an essential for the four-legged member of the household. Close behind is the spacious, functional kitchen that anchors the heart of the home. The open-plan living flows effortlessly onto a sun-soaked patio, and we even managed to slide in a second lounge—perfect for those nights when the family can't agree on a show.

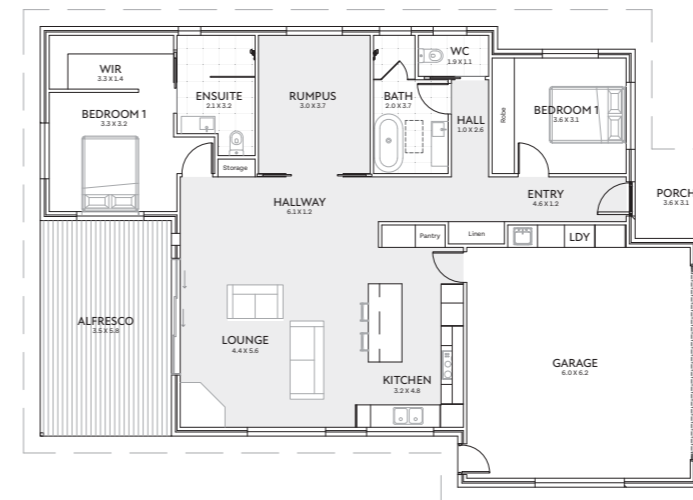
Skylights and crisp white finishes bring a fresh, welcoming feel throughout, while our client's thoughtful styling adds warmth and personality to every room.

It's the perfect blend of comfort and customisation—a true forever home.

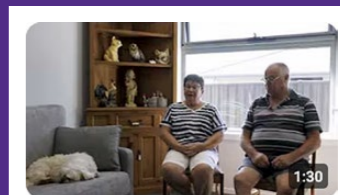


ROSS & JAN

“(Platinum Pro were) very professional and very friendly. Nothing is a problem when they try to help us with our questions and understanding of the process... If you go with Platinum Pro, you won't have to worry about a thing. It'll be done to perfection, and they put in 110% all the time... I can't fault them one bloody iota.”

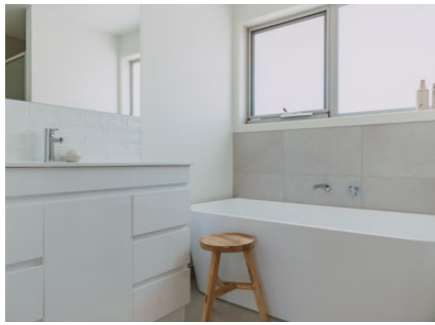


Watch the handover video



Platinum Pro Construction - Handover with Jan and Ross

31 Jerding
202m²



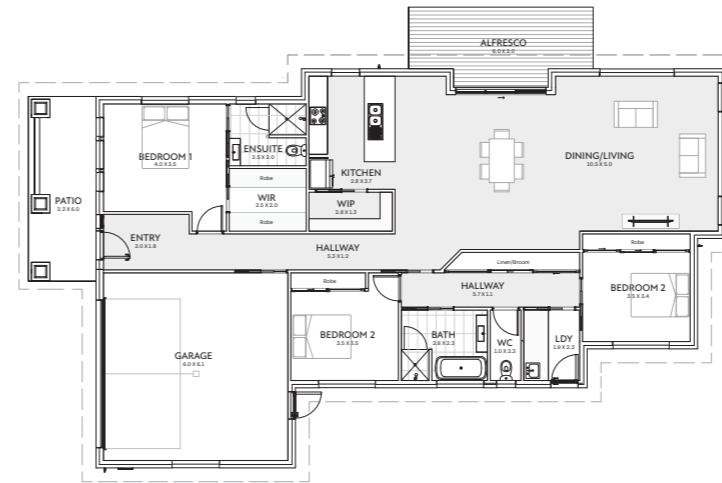
Personality, warmth & a touch of vintage flair

This West Beach Estate home is as welcoming as it is unique—a fresh exterior paired with a lively, light-filled interior that reflects our client’s personality in every detail.

From the moment you step through the feature front door, there’s a sense of comfort and charm. The kitchen’s warm tones are beautifully balanced by vintage-style cabinetry handles, adding a touch of character to the space. The open living area is bright and airy, while the walk-in robe is everything dreams are made of.

Thoughtful, personal touches shine throughout—from the layout to the styling—and those ensuite tiles? Absolutely divine.

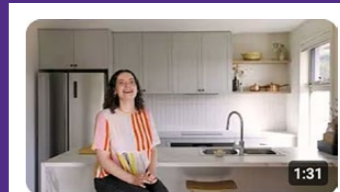
This home is a true reflection of its owner: individual, elegant, and full of heart.



ANNEIKA

“I just felt that I could trust the process with them, and I was right! Definitely recommend Platinum Pro Construction – things were done on time, I always felt included, it was seamless and I didn’t have to worry about logistical stuff.”

Watch the handover video

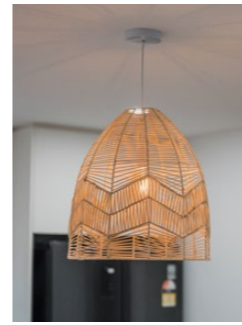
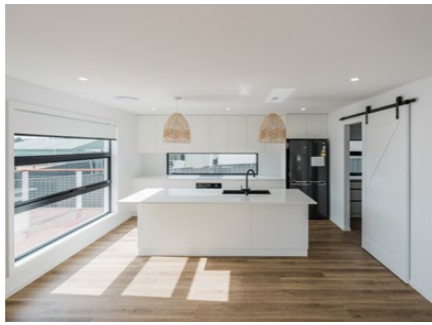


Platinum Pro Construction - Handover with Anneika



9 Lillian

202m²



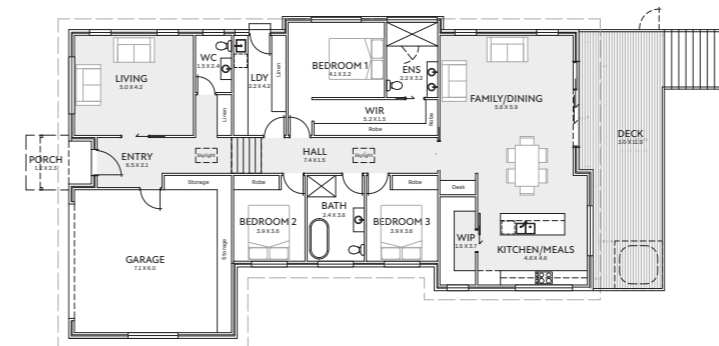
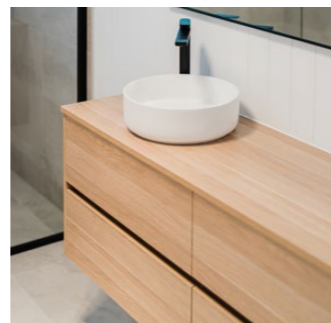
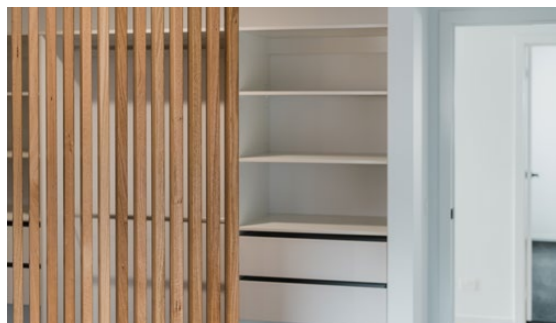
Coastal calm, turned up a notch

In a sought-after pocket of Turners Beach, this 3-bedroom, 2-living, 2-bathroom home is already turning heads. Lillian Court blends soft coastal tones with timeless finishes—setting the scene for relaxed, resort-style living.

From the moment you step through the solid timber front door, you're welcomed by striking wall panelling and a sense of calm. Skylights throughout invite natural light to flow, highlighting the herringbone splashback tiles, Castlemaine vinyl planks, and Enzo bathroom tiles—all finished in classic chrome for a clean, modern look.

Outside, it's all about texture and tone, with a skillion roof in Surfmist Colorbond, Austral San Selmo Limewash bricks, and a decked outdoor space perfect for summer evenings.

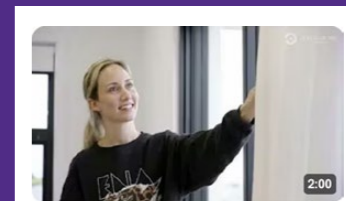
A standout in every sense—Lillian Court is the perfect blend of function, style, and that easy coastal feel.



JESS & DWAYNE

"From the first moment we met Sam, he had ideas that really made our home feel like a home to us... we finally feel like 'this is home'. I really loved it when the builders would say to us 'wow, this is going to be a really cool house!'. What we really loved is that we could go to Platinum and they could do everything from start to finish."

Watch the handover video

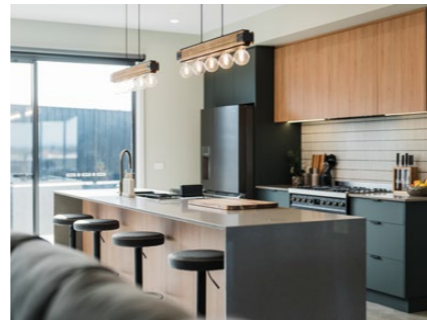
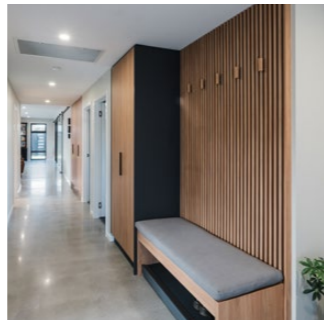


Platinum Pro Construction - Handover with Jess and Dwayne



14 Pepik

202m²

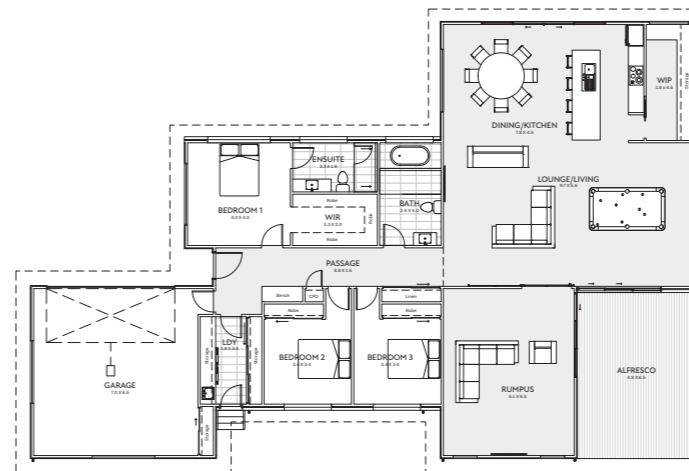
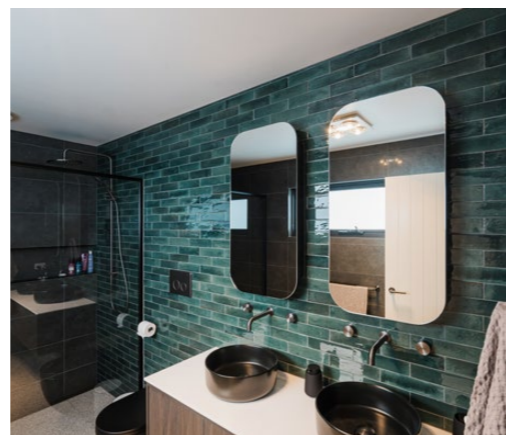
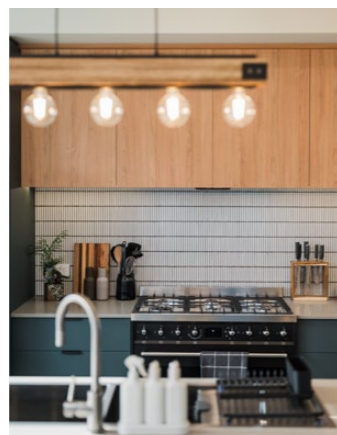
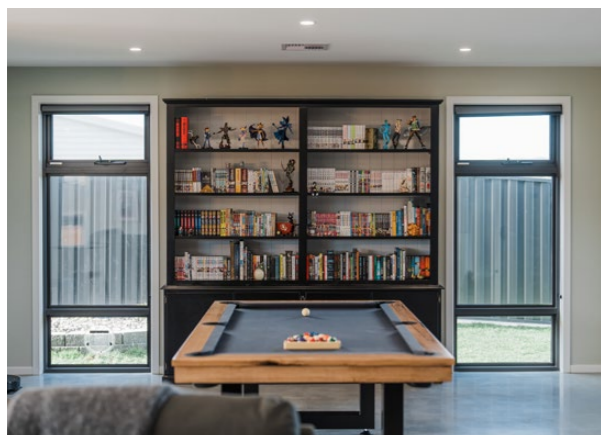


Polished, practical & pet-approved

Ashton and Hannah came to us with a clear brief: a flowing, open-plan home that worked for their lifestyle—and their beloved pets. We collaborated closely to design just that, using our selection booklet to lock in all their finishes before the build began.

At 14 Pepik Street, open-plan living shines, with three bedrooms, two living areas, a hidden walk-in pantry, and polished concrete through the entry, kitchen, and main living. Ducted heating and a deluxe 900mm gas oven complete the picture.

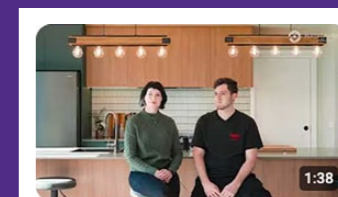
Outside, it's all about texture and tone—Daniel Robertson Hawthorn bricks, Colorbond Nailstrip, and spotted gum timber cladding create a striking finish, tied together with exposed aggregate paths and a sleek concrete driveway.



ASHTON & HANNAH

"The team really took the time to consider what we were after and what we wanted... a custom design and not anything that was pre-planned and they were really accommodating... It's new, we've never built before and it's a brand new experience. We've loved every bit of it!"

Watch the handover video



Platinum Pro Construction - Handover with Ashton and Hannah



51-53
Fleetwood
157m²



Timeless Hamptons, thoughtfully designed

Introducing Fleetwood Villas – East and West Hampton – a pair of beautifully crafted Hamptons-style residences that blend elegance, comfort, and functionality in every corner.

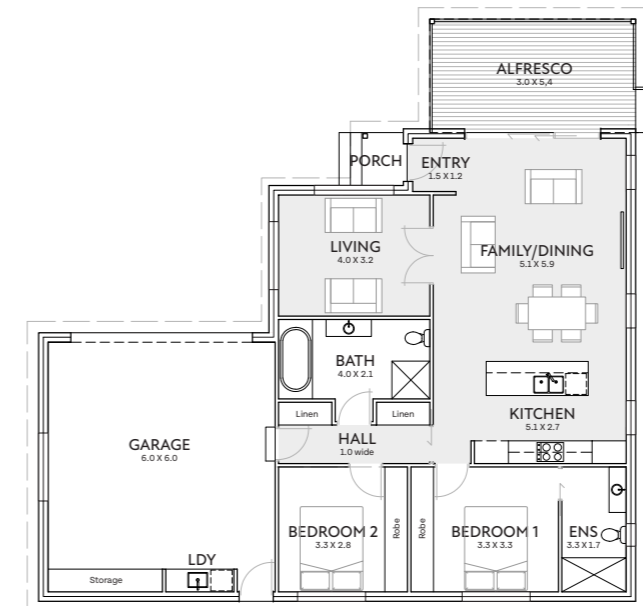
Designed with lifestyle in mind, each villa features two generous bedrooms with built-in robes, a luxurious master ensuite, and a seamless indoor-outdoor connection through full-height sliding doors and an expansive alfresco. The striking gabled façade brings a touch of Queenslander charm, while natural light floods the interiors thanks to thoughtful skylight and window placement.

Inside, every detail has been considered:

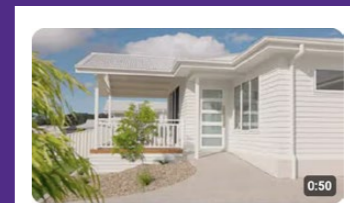
- Polished white concrete floors in the bathrooms by Hazell Bros offer durability with a soft, modern finish
- Fluted wood breakfast bar, Caesarstone ‘Snow’ benchtops, and brushed gold tapware elevate the kitchen
- Designer bathrooms with arched mirrors and floor-to-ceiling tiles add warmth and luxury
- Polytec joinery and custom finishes bring texture and depth throughout

Set in a quiet cul-de-sac with laneway access to local shops, Fleetwood Villas deliver refined living with a sustainable edge—featuring double glazing, energy-efficient lighting, and clever design solutions that reduce maintenance while enhancing comfort.

Stylish, smart, and full of charm—these villas are Hamptons living, reimagined for today.



Watch the
handover
video



Platinum Pro Construction - 4043 Fleetwood Villas



PLATINUM PRO
Construction

It starts with **us.**

03 6427 2676

hello@platinumproconstruction.com.au

PO Box 2090, Spreyton TAS 7310

PLATINUMPROCONSTRUCTION.COM.AU

